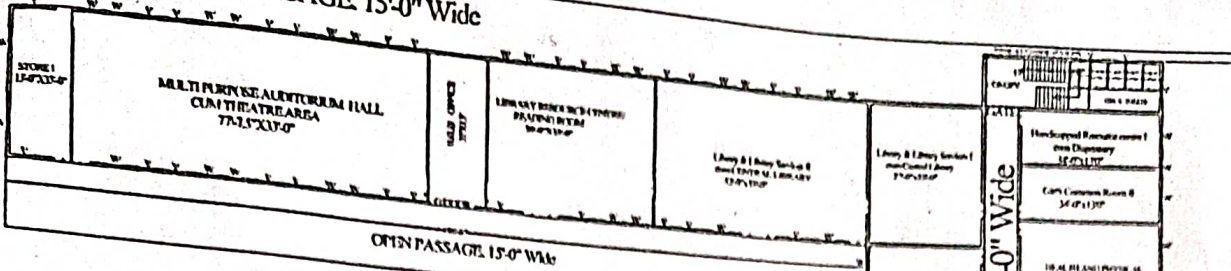


OPEN PASSAGE 15'-0" Wide



OPEN PASSAGE 15'-0" Wide

BUILDING PLAN OF BHARAT VIDHYA PEETH COLLEGE OF EDUCATION CUM LABS/LIBRARY & HALLS AREA.
 RUN BY - BHARAT VIDHYA PEETH V.P.O. KASANDI, TEH. GOHANA, DISTT. SONIPAT (HARYANA)
 SITUATED AT GOHANA -GANAUR HIGH WAY ROAD WAYA MAHILA UNIVERSITY KHANPUR KALAN
 TEH. GOHANA DISTT. SONIPAT. KILA'S NO'S SPACIALLY ARE MARKED FOR BHARAT VIDYA PEETH
 COLLEGE OF EDU-CUM LABS/LIBRARY & HALLS AREA-
 R4/13/2,14,15/1,15/2/1,17,18/1,21/2,24,33/3 TOTAL=48 KANAL 0 MARLA OR =6 ACRE OUT OF WHICH KHASRA NO.
 R4/14,18/1 AND 17 HAS BEEN EAR MARKED FOR COLLEGE OF EDUCATION.

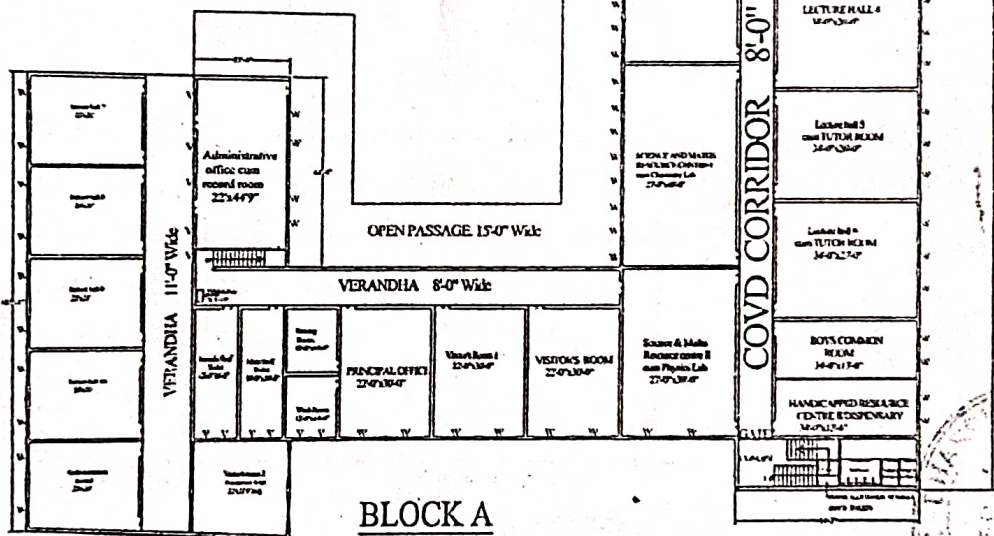
DETAILS OF AREA

TOTAL LAND AREA UNDER COLLEGE OF EDU-CUM LABS/LIBRARY & HALLS AREA=2 ACRES 2 KANAL 15 MARLA
 99709 SQUARE METER

GROUND FLOOR EXISTING COVID AREA BLOCK A =39877.75 SQ.F.T OR 3709.55 SQ.M.T.



1/1/2020



BLOCK A

BUILDING PLAN OF BHARAT VIDYA PEETH COLLEGE OF EDUCATION
 VILLAGE KASANDI SUB. TEHSIL KHANPUR KALAN DISTT. SONEPAT
 THROUGH ITS PRESIDENT Sh. SANDEEP ARYA S/o Sh. SATPAL ARYA
 R/O KASANDI.

DESIGN CONSULTANT BUREAU
 Shop No.11 M.C. Market
 Tehsil Road Gohana, Sonipat
 Ph. 9466431990

Drg.No. 12
 GROUND FLOOR
 PLAN
 Architect
 M.S. Bhardwaj
 Drg. By: SONIA
 Scale :- N.T.S.
 Directions

23 DEC 2022

Principal
 Bharat Vidya Peeth College of Education
 Kasandi, Sonapat

सरपंच,
 ग्राम पंचायत, कासण्डी
 तहसीर गोहाना (सोनीपत)

Handwritten signatures and stamps, including a circular official stamp and a signature of Sandeep Arya.